

Southfields Academy

Year 10 into Year 11

Summer Holiday

Homework

2017-2018

Name: _____

Tutor: _____



Contents

| Page Number | Subject | Tick when h/w complete. Put a cross in subjects you do not study. |
|-------------|----------------------|--|
| 1 | English | |
| 3 | Mathematics | |
| 5 | Science | |
| 7 | 3D Design | |
| 9 | Art | |
| 11 | Business Studies | |
| 13 | Computer Science | |
| 15 | Construction | |
| 17 | Drama | |
| 19 | Geography | |
| 21 | Graphics | |
| 23 | Health & Social Care | |
| 25 | History | |
| 27 | Music | |
| 29 | PE/Sport | |
| 31 | Spanish | |

Year 10 English Summer Study

These tasks are designed to guide your revision for the English Literature Paper 1 mock in September. We also want you to read a range of texts to broaden your knowledge of fiction and non-fiction texts in preparation for both Language papers.

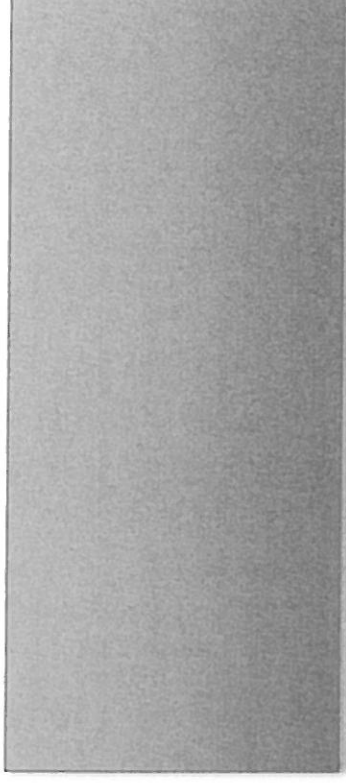
English Literature Paper 1 Section A: Romeo and Juliet

1. **Read the play.** Make sure you have annotations that cover main themes and characters (AO1) and note interesting uses of language (AO2).
2. **Watch a version of this play** – it could be animation, pastiche or parody where you recognise the narrative features of R&J. Write the title of what you watched here:

3. **Key quotations.** You will need to provide evidence for your teacher. Will you use flashcards? Mindmaps for each act/theme/character with illustrations to help you to remember? Or will you organise your quotations into lists?

Language Paper 1 – Creative Writing

We want you to read fiction that is GCSE appropriate in terms of level of challenge. **You must read at least one novel.** Please list novels and authors below:



English Literature Paper 1 Section B: A Christmas Carol

1. **Read the novel.** Make sure you have annotations that cover main themes and characters (AO1) and note interesting uses of language (AO2).
2. **Watch a version of this film** – it could be animation, pastiche or parody where you recognise the features of ACC. Write the title of what you watched here:

3. **Key quotations.** You will need to provide evidence for your teacher.

Language Paper 2 – Writers' Viewpoints

Practise reading and writing through the following tasks:

- 1) **Watch** the news/ **read** a quality newspaper and **choose** an issue that interests you and write a short summary of the news item.
- 2) **Write** a review of your issue. **Consider** both sides. **Present** your opinions through an article, essay or a speech.


Challenge: *source a piece of non-fiction with a similar theme from the C19th Century. Can you identify the writer's feelings and attitudes?*

Mathematics – Summer Homework

With the new Maths GCSE increasing in size, it is imperative that you keep revisiting and stay on top of the topics that you have studied in Year 9 and 10 so far.

Based on the results of your most recent mock exams, your teachers have carefully selected questions for you to complete over the summer holidays. All of the work will be set on the MathsWatch website (<https://vle.mathswatch.co.uk>). Your Maths teacher will have informed you of the specific work set for each class and will have provided you with a login and password for this.

Please keep an eye on the due dates as your teacher may expect you to complete certain tasks by certain dates.



The screenshot shows the MathsWatch website header with the logo and navigation links: My Work, Videos, Extras. Below the header is the 'Assigned Work' section. It includes filters for 'This Year's Work', 'All Work', and 'Showing All Types'. There are progress bars for 'Homework Average' (75.8%) and 'Test Average'. A table lists assigned homework tasks with columns: Title, Type, Assigned By, Assigned, Due, Marks, and %.

| Title | Type | Assigned By | Assigned | Due | Marks | % |
|--|------|-------------|------------|------------|---------|------|
| Y10 SUM2 Foundation Paper 2 Revision | HW | F Duffy | 23/06/2017 | 28/06/2017 | 118/118 | 100% |
| Y10 - Geometry - Foundation revision | HW | F Duffy | 09/06/2017 | 28/06/2017 | 29/50 | 58% |
| Y10 - Probability & statistics - Foundation revision | HW | F Duffy | 09/06/2017 | 28/06/2017 | 27/64 | 42% |
| Y10 - Ratio & proportion - Foundation revision | HW | F Duffy | 09/06/2017 | 28/06/2017 | | |
| Y10 - Number - Foundation revision | HW | F Duffy | 09/06/2017 | 28/06/2017 | 48/48 | 100% |
| Y10 - Algebra - Foundation revision | HW | F Duffy | 09/06/2017 | 28/06/2017 | 54/68 | 79% |

For the very small proportion of you that will not have internet access over the summer, once we have verified this with your parents, we will provide you with a paper copy of the work.

This will need to be submitted on your first day back in September.

The tasks set have been identified based mostly on the topics you have covered in Year 9 and 10, for consolidation purposes. Some teachers may set questions on topics you will begin studying in September, to give you a head start. For this reason, we urge you to try to access internet through local libraries etc if you are struggling to access it at home.

IF YOU HAVE LOST YOUR LOGIN DETAILS:

Please contact Mr Duffy by email at finbarr.duffy@southfields.wandsworth.sch.uk and he will try to respond as quickly as possible.

Science

Summer Holiday Homework 2017

Year 10 into 11

Science Skills Questions:

- Complete the exam paper that your science teacher gave you to the best of your ability.
- You will be tested on the content of this paper in September.
- Please use your own knowledge and find information from books and the internet to help you.
- Make sure you read the questions fully and look up any words you do not understand.
- If you are scared of doing the whole paper, try doing one question per day.
- If you lose the paper you can download a copy here:

www.southfieldsacademy.com/outside/outside_year11/resources/SCIENCE.pdf

If you need extra support or guidance please email me at:

dominic.munson@wandsworth.southfields.sch.uk

3D Design Summer Holiday Homework

Lamp project: research homework

In order to improve your grades for this project you must do some of your own research of lamp/light designers and their products. You can use:

- The internet
- Books (library)
- Magazines (including brochures ie the IKEA catalogue)
- Real life (shops, exhibitions, or just interesting lamps around the house!)

For each designer/product researched, collect information in the form photos, sketches, clippings from magazines etc.

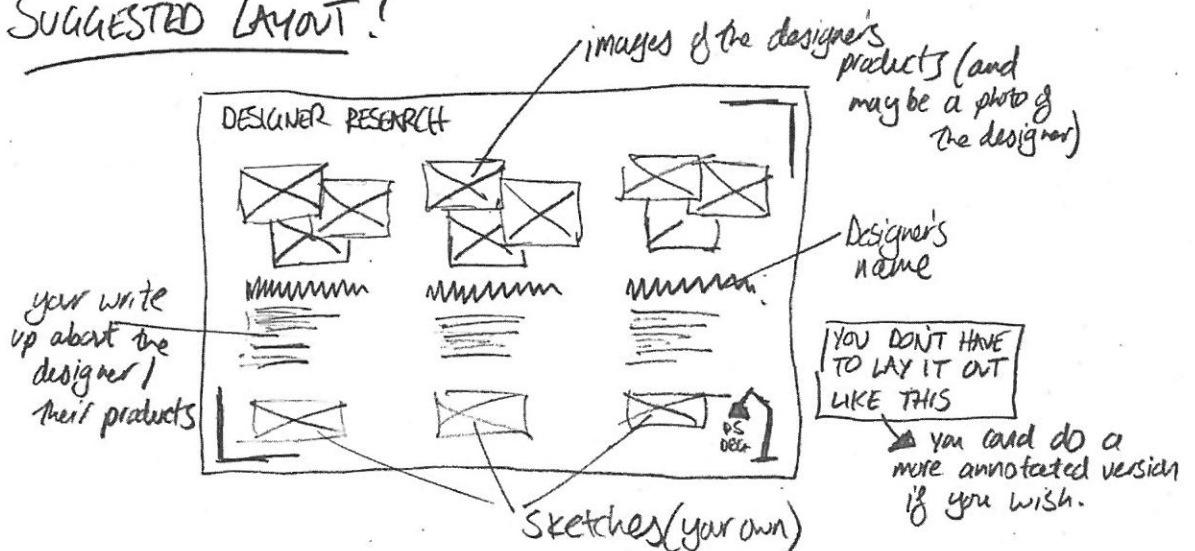
Collect the information and if possible bring it together on powerpoint or on A3 paper.

Annotate/evaluate the sketches/ research:

- Why his/her work interests you
- Sketch 1 or 2 ideas of how the designers' work can inspire you in your work.
- How can the work inspire you to do a 2D/3D Investigation in the workshop so you can test how you will build the lamp? Think of the materials you would use if you were to test something?

At the end of the page, write a sentence identifying the different kind of 'themes' of light you have researched. eg. futuristic, retro, functional, decorative etc.

SUGGESTED LAYOUT!



Art Summer Homework - Theme: Portraiture

Unit 1: Research and investigate sources of ideas in art and design

Your next art project will be based on different portraits . You will begin your research by investigating key words and ideas.

1. Think about the different 'messages' (emotions) that portraits try to communicate.
2. Select three or more different portraits (of paintings that you find in the internet) and label them with all the different aspects that support in conveying a message/emotion (pose, colour, expression, background, mood, other objects, where are they looking... (10 words/ sentences or more each)
3. Collect pictures (images , photographs, magazine cut outs , selfies) of different portraits showing different moods
4. Photograph yourself and your friends and family showing different expressions
5. Draw two detailed sketches (using different materials if possible) of the images collected.
6. Write a paragraph about how you used line, tone and composition in your drawings and explain what kind of mood do they help to create.
7. E-mail photographs of your work to your art teacher

nuno.reis-moreira@southfields.wandsworth.sch.uk



Picasso-The Weeping Woman, 1937



Double Gulp - Rachel Mosely, 2015

Business Studies Summer Holiday Homework

Preparation task for Controlled Assessment Investigation 2.

Please complete the following piece of research to help you with your controlled assessment. Your teacher will expect you to hand in your tasks during your first lesson back.

Context:

Promotion is a vital part of the marketing mix. Methods of promotion are varied and must be chosen carefully to fit a given business in a given situation.

Glossary:

Sales promotion are the methods by which a business tries, over a short period of time, to boost sales; for example, by reducing prices.

Merchandising is the promotion of products by selling goods in some way connected with another product or event; for example, the sale of figures of characters who appear in a major film.

Point of sale promotions are used where the product is sold; for example displays.

Task 1. Research task.

Create a portfolio of evidence of the different methods of at least 5 promotion methods that businesses use. For example, flyers, business cards, questionnaires, photos of the shop front, photos of posters, and screenshots from the website or social media sites, examples of special offers.

You need to gather information on the following:-

- How small local businesses in Wandsworth promote themselves e.g. a coffee shop/small mechanics
- How medium size businesses such as Costcutter promote themselves.

Task 2. Analysis of research.

Draw out a table with the following titles and complete for each piece of research you have found.

An example has been given for you.

| Method of promotion | What is good about this method of promotion? | What would you improve about this method of promotion? | Who do you think is the target audience of the promotion? Give a reason for your answer? | What type of business should use this promotional method and why? |
|----------------------------|--|---|--|---|
| e.g. Leaflet | Colourful, uses pictures of the product, give details of what products are on sale and when the shop is open | I would include a bit of information on services and quality of staff | Local people who live in Wandsworth because leaflets are usually distributed through letter boxes of people who live in the area | A small business like a mechanics because it is cheap and targets people who live in the area and so might need to get their car fixed. |

Computer Science Summer Homework

Analyse the scenario below and complete the analysis and design stages of the system life cycle. Also, produce a list of the algorithms that you will need such as “Login, Log out, Enter Student Data” and then produce Data Flow Diagrams and Pseudocode.

Sample Scenario 1

When new students arrive at Tree Road School, they are assigned:

- A unique ID number
- A tutor group
- A unique school email address

A tutor group contains approximately 25 male and female students. Mr Leeman is a form tutor and wants a simple computer system to manage his tutor group. Mr Leeman wants to be able to have a user friendly interface that allows him to log into the system and carry out the necessary administration.

The details of the students that Mr Leeman needs are:

- Unique ID number
- Surname
- Forename
- Date of birth
- Home address
- Home phone number
- Gender
- Tutor group
- Unique school email address.

Analyse the requirements for this system and design, develop, test and evaluate a program that allows Mr Leeman to:

1. Log in with a username and password
2. Access a menu system
3. Enter and store the students details
4. Log out
5. Retrieve and display the details of any student when Mr Leeman enters the student’s unique IDnumber.*
6. Create at least three different reports that Mr Leeman might need, and describe how he would use each one.
7. Produce these reports when selected from a menu.

Reading labels and instructions for construction

Read this product label and answer the questions below.

Vinyl adhesive

Suitable for vinyl floor-coverings and cork tiles

Application:

1. Use 1.5 mm x 5mm notched trowel for vinyl and 2mm x 6mm for cork.
2. Apply adhesive evenly to the substrate and allow it to dry for 30 – 60 minutes until just wet.
3. Press tiles firmly into place.

Coverage: appx 3m²/kg depending on the porosity of the substrate.

Storage: 12 months if stored between 5 - 30°C in a cool, dry area, in original unopened containers.

Health and safety

- Do not ingest
- Keep out of reach of children and pets
- Avoid contact with eyes and skin
- Wear suitable protective clothing

1. The adhesive is suitable for wallpaper.
 - a. true
 - b. false
2. You can use the same trowels for vinyl and cork tiles.
 - a. true
 - b. false
3. 'Ingest' means:
 - a. swallow
 - b. rub into skin
 - c. inhale
4. The adhesive comes in 1 kg cans. How many cans will you need to order for:
 - a. a wall measuring 3 metres by 5 metres
 - b. a floor measuring 7 metres by 5 metres

Please turn over



Reading instructions in construction

If you work with products such as paint and adhesive, you will need to read labels carefully to check the contents and to find out how to use and store them.

Quantities

Pay special attention to numbers and measurement. You need to know approximately (approx) how much of a product to order for a particular job.

You are coating a 12 m^2 wall using vinyl adhesive. You need 1 kg of adhesive to cover each 3 m^2 . Divide the area (12) by the coverage (3) to find the total quantity. In total, you need 4 kg.

If the number does not divide exactly, you will have to round the remainder up to the nearest complete unit. So for 14 m^2 divide 14 by 3 = 3 remainder 2. You will need 4 cans in total.

Bold print is often used for section headings.

Numbered lists are used for instructions that you need to carry out in order.

Bullet points are used for key points, listed under a heading.

Vinyl adhesive
Suitable for vinyl floor-coverings and cork tiles
Application:

1. Use 1.5 mm x 5mm notched trowel for vinyl and 2mm x 6mm for cork.
2. Apply adhesive evenly to the **substrate** and allow it to dry for 30 – 60 minutes until just wet.
3. Press tiles firmly into place.

Coverage: aprox 3 m^2 /kg depending on the **porosity** of the substrate.
Storage: 12 months if stored between 5 - 30°C in a cool, dry area, in original unopened containers.
Health and safety

- Do not **ingest**
- Keep out of reach of children and pets
- Avoid contact with eyes and skin
- Wear suitable protective clothing

Check the meaning of any unfamiliar words. Use a dictionary or look online. For example, the meaning of substrate is 'an underlying layer'.

Drama summer holiday homework

Exploring a text for section A of the written exam

In section A of your final GCSE exam that you will sit in the summer you will have to analyse *Blood Brothers* by Willy Russell. This homework is so important to re-cap your learning of *Blood Brothers* and prepare you for the start of year 11.

Research

For this activity you will need to complete research and present this on no more than two sides of A4 paper. Please write your answers in full sentences.

- What time period was *Blood Brothers* set?
- What was happening socially at the time in which the play was set?
- What social issues does *Blood Brothers* reference?
- What genre is *Blood Brothers*?
- List all of the themes that are communicated in *Blood Brothers* (there are 7)
- Research Margaret Thatcher and explain how Margaret Thatcher is linked to the play

Characters

List all of the characters (with the correct spelling) who are in *Blood Brothers*.

Indicate who the principal characters are.

Plot

For this activity you should write the story of *Blood Brothers* on no more one side of A4 paper.



GCSE Geography Summer Homework:

Directions: These are the key terms that you absolutely need to know and use in your exam responses. Create flash card sets in 3 different colours with the answers on the back. Bring them to school on the first day of lessons. Know the terms for an assessment in the first week!

Coastal Zone

Fetch
Beach
Crest/trough
Swash/backwash
Constructive wave
Destructive wave
Cliff
Rockfall
Hydraulic power
Corrasion
Abrasion
Attrition
Longshore drift
Bay/headland
Wave-cut platform/notch
Cave
Arch
Stack/stump
Spit

Salt marsh
Landslip
Shoreline management plan
Hard engineering
Soft engineering
Sea wall
Groyne
Rock armour
Managed retreat
Weathering
Mass movement
Landslide
Mudflow
Rotational slip
Mudflow
Mechanical weathering
Biological weathering
Chemical weathering
Sub aerial processes
Marine processes

Living World

Adaptation
Biome
Biodiversity
Conservation
Carbon sink
Deforestation
Degradation
Desertification
Food chains
Food webs
Debt relief
Non-governmental organisation (NGO)
Commercial farming
Salinisation
Habitat
Hot desert
Lianas
Buttress roots
Canopy
Emergent layer
subcanopy

Restless Earth

Active Volcano
Anticline
Composite Volcano
Conservative Boundary
Constructive Boundary
Continental Crust
Convection
Crater
Crust
Destructive Boundary
Disaster
Distribution
Dormant Volcano
Earthquake
Epicentre
Extinct Volcano

Restless Earth Continued:

Fault
Focus
Fold Mountain
Geosyncline
Hazard
Igneous Rock
Inner Core
Lava
Magma
Magma Chamber
Magnitude
Management
Mantle
Mercalli Scale
Metamorphic Rock
Monitor
Oceanic Crust
Oceanic Trench
Outer Core
Plate Tectonics
Primary Effects
Response
Richter Scale
Secondary Effects
Sedimentary Rock
Seismic
Seismograph
Shield Volcano
Shock Waves
Subduction Zone
Supervolcano
Syncline
Tiltmeter
Tsunami
Vent
Volcano

Graphics Summer Holiday Homework

Primary Research:

Clothing Shop Research Homework

In order to get a decent grade for the research part of this project you need to do your own research by taking photos in a clothing brand store or a clothes retailer.

Take photos of all the things in a shop that a graphic designer could produce. These things could be:

- The outside shop sign and window display
- A gift card or store card display.
- Any large pictures or photos inside the store showing lifestyle or product shots.
- Any signs telling you to go somewhere.
- Anything else which promotes the brand or the retail shop that a graphic designer has designed.

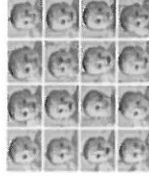
The photos have to be inserted on a new PowerPoint file and then annotated. You can do this at home if you have the program, otherwise you can do it when you get back to school in year 11. Make sure you write your annotation notes on a piece of paper if this is the case.

Task 1: Communication Key Terms

In unit 3 you will study Effective Communication in Health and Social Care as this is the most important skill needed in the sector.

TO DO: Find a book about communication in the library or use the internet to create a glossary for the unit by writing a definition and a H&SC example of the key terms:

- Verbal Communication
- Non-Verbal Communication
- Formal Language
- Informal Language
- Active Listening Skills
- Facial Expressions
- Eye Contact
- Posture
- Gestures



Task 2: Alternative Forms of Communication

TO DO: Produce a leaflet called: 'Forms of communication for different needs'. Research these alternative forms of communication:

- Braille and Braille Software
- British Sign Language
- Makaton
- Technological Aids (e.g. loop system or hearing aids)

Task 3: Barriers to communication and how to overcome them

In Unit 3 you will study barriers to communication and learn strategies on how to overcome them in order to interact effectively in health and social care settings.

TO DO: Create a poster outlining different types of barriers to communication and provide clear guidance on how to overcome them, e.g. language barriers becoming the barrier - preferred language being the solution

Barriers include - the environmental (e.g. busy, noisy rooms), types of physical difficulties (e.g. disabilities, illness), language, social isolation (lack of confidence)

Ways to overcoming barriers include - using preferred language (e.g. interpreters or translations), adaptations to the environment (e.g. bright lights, private space), effective non-verbal communication, alternative forms of communication

EXT: Research one of the 350 plus careers available within the NHS. Once selected, create materials to promote it, starting with a job description to demonstrate your understanding of the role followed by a fun and lively job advertisement to appeal to other people your age.

History Summer Holiday Homework

Revisit Medicine Through Time

Revision Guide: answer EITHER Questions 1 – 12 or 13 -30 on page 32.

Revise The British Sector the Western Front

Revision Guide: answer the questions on ANY of the five topics given on page 39.

Return to Weimar Germany

Revision Guide: answer questions 1 – 14 on Page 134

Optional Extras:

1. Read through the section on Elizabethan England (pages 90 – 112).
2. Answer the questions on page 112.
3. Watch “Elizabeth” starring Cate Blanchett.

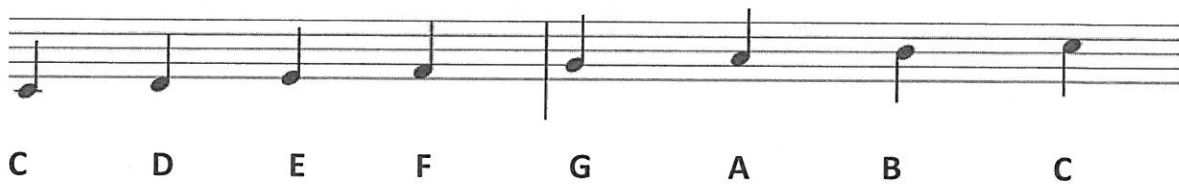
Name: _____

Music Summer Holiday Homework: Rhythm & Pitch

Intervals:

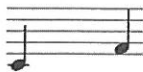
An interval is the distance between two notes -

Tonic (1st) 2nd 3rd 4th 5th 6th 7th
Octave (8 notes C-C)



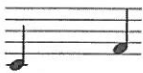
Task 1 – Write the intervals between the following notes:

Example:



C – F is a 4th _____

a)



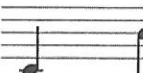
b)



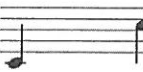
c)



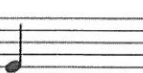
d)



e)



f)



g)

Research the following and complete:

1) What is a chromatic melody?

2) Draw the 5 notes of a C major pentatonic scale:

3) Describe 'scalar movement':

4) What is a triadic melody?



Components of fitness

PE / SPORT Summer Holiday Homework

Explain how a 400m runner uses speed, agility and coordination during a race.



Health components of fitness

Body Composition:

Muscular Endurance:

Muscular Strength:

Flexibility:

Cardiovascular Fitness:

Skill components of fitness

Coordination:

Reaction Time:

Agility:

Balance:

Speed:

Power:

Reflect on your own health and skill components of fitness and score yourself out of 10.

1 is poor 10 excellent.

Create a rhyme/poem/rap/acronym that will help you remember all components of fitness and examples of when they are used.



Components of fitness

@S.P.O.R.T



Following



Write a sporting example for each skill component of fitness #Skill #CRABSP #LegitExamples #creative

Twitter

140

Power = _____

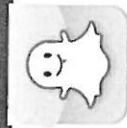
Agility = _____

Coordination = _____

Balance = _____

Reaction time = _____

Speed = _____



Send a snapchat of a sporting example where you are using agility. Screen shot your snap and add it above.

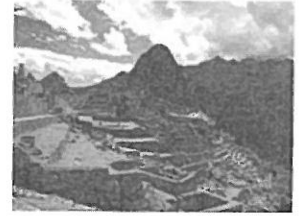
Scan the above QR code with QR scanner using your phone or IPAD and make notes on examples for health components of fitness.





Spanish summer homework

Topic: Ciudades



1. Research a Spanish speaking country and choose a town or region you find interesting.

Research the following information:

- Location
- Population
- Climate
- Accommodation
- places on interest
- things to do

2. Imagine you work in the tourist industry and you are asked to create a brochure of the Spanish speaking place you chose in task 1.

Your aim is to attract tourists and advertise the place to them.

Include all the information you have researched in task 1 and make sure your brochure is in **Spanish**. Your brochure must also be presented in a neat and attractive way.

Supporting websites:

Online dictionaries: <http://www.wordreference.com/>

Online verb conjugator: <http://www.verbix.com/languages/spanish.shtml>

Spanish tripadvisor: <https://www.tripadvisor.es/>

Useful vocabulary:

| | | | |
|---|---|---|---|
| ¿Cómo es tu zona? está situado/a en un valle entre el desierto y la sierra | What is your area like? it is situated in a valley between the desert and the mountains | acogedor/a / atractivo/a famoso/a / conocido/a por una región muy húmeda una zona muy montañosa / pintoresca | welcoming / attractive famous for / well-known for a very humid region a mountainous / picturesque area |
| al lado del río / mar Mediterráneo Está... | by the river / Mediterranean sea It is... | tan fácil desplazarse | so easy to get around |
| rodeado/a de volcanes / sierra lleno/a de bosques / selvas a ... metros sobre el nivel de mar | surrounded by volcanoes / mountains full of woods / forests at ... metres above sea level | Se puede... | You / One can... |
| Tiene... | It has... | estar mucho tiempo al aire libre subir a la torre hacer un recorrido en autobús disfrutar de las vistas / del ambiente viajar en el AVE pasear por los lagos artificiales apreciar la arquitectura variada aprovechar el buen tiempo | spend lots of time in the open air go up the tower do a bus tour enjoy the views / the atmosphere travel on the AVE high-speed train go boating on the artificial lakes appreciate the variety of architecture make the most of the good weather |
| unos impresionantes paisajes naturales varias influencias culturales el bullicio de una ciudad | some amazing natural landscapes various cultural influences the hustle and bustle of a city | Se pueden... | You / One can... |
| El clima es... | The climate is... | probar platos típicos practicar deportes acuáticos ver edificios de estilos muy diferentes | try local dishes do water sports see buildings with very different styles |
| soleado / caluroso / seco / templado / frío | sunny / hot / dry / mild / cold | alquilar bolas de agua practicar senderismo y ciclismo | hire water balls go hiking / trekking and cycling |
| llueve (muy) poco / a menudo en primavera / verano / otoño / invierno | it rains (very) little / often in spring / summer / autumn / winter | | |
| hay mucha marcha | there is lots going on | | |
| Es... | It is... | | |
| mi ciudad natal / mi lugar favorito | My home town / my favourite place | | |

